



DATA SHEET

No.

SHEET

1 of 1

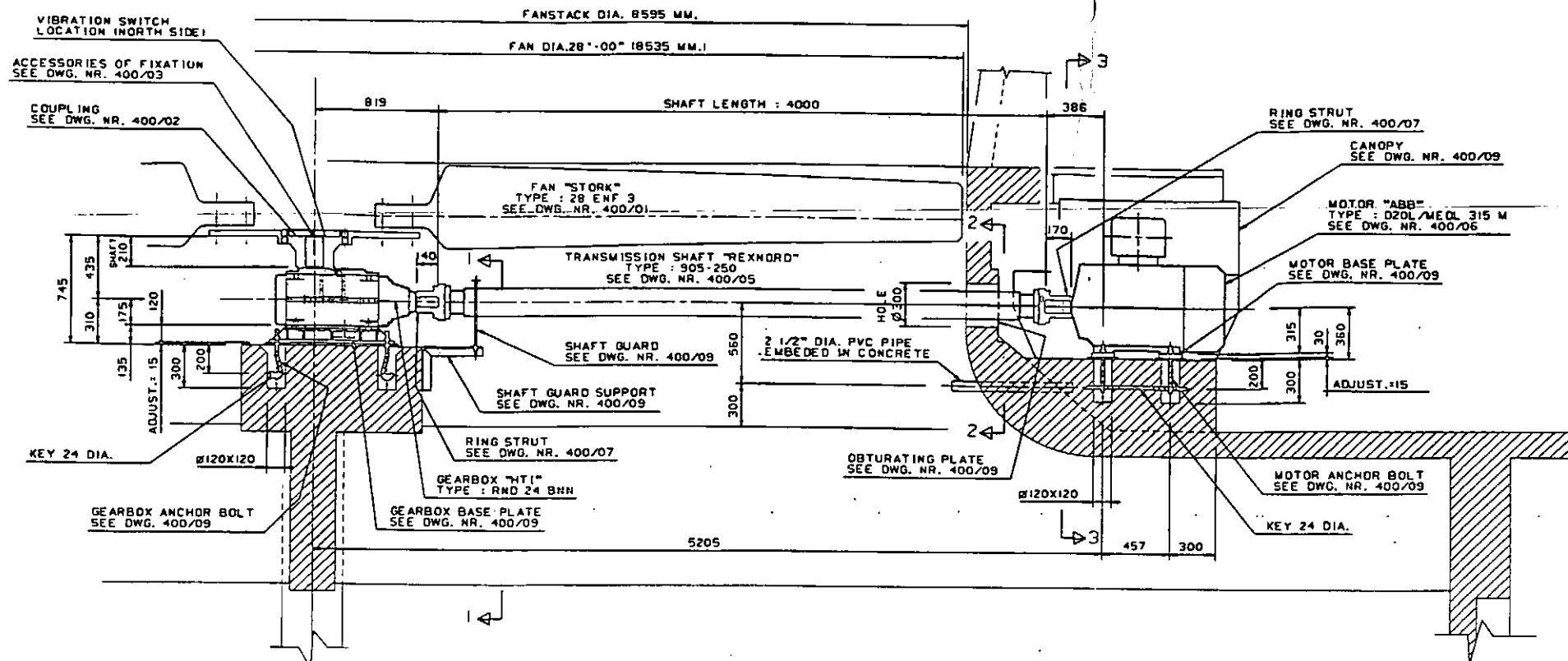
DATE

25 - APR - 91

SPECIAL-PURPOSE GEAR

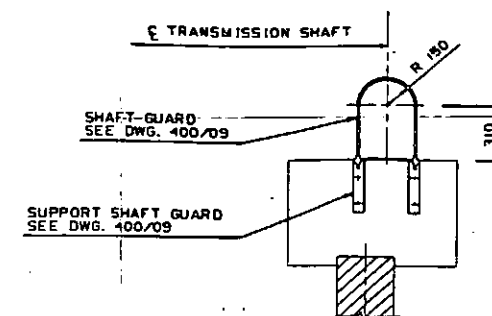
1	Client	HAMON-SOBELCO	Project	ARAK REFINERY	IRAN	Item No.	
2	Unit		Service				
3	No. required	8	Quot. Name Level			Mfrs Model	RN24
4	Type	RND24-BNN-412	Manufacturer	HANSEN TRANSMISSION INTERNATIONAL		Serial No.	R04A148060/5
5	Driven Equipment Item No.		Type of Drive	ELEC. MOTOR			
6	RATING REQUIREMENT				CONSTRUCTION FEATURES		
7	Driven Equipment BHP	Req./Max. kW, HP	7104	Type of Gear	<input type="checkbox"/> Horizontal	<input checked="" type="checkbox"/> Vertical	
8	Driver BHP	Rated/Req. kW, HP	90/15		<input type="checkbox"/> Single	<input checked="" type="checkbox"/> Double Stage	
9	Gear Rated HP	kW, HP	225 kW		<input checked="" type="checkbox"/> Single	<input type="checkbox"/> Double Helical	
10	Torque @ MCR	kg-m, lb-ft	16.2 kNm		<input type="checkbox"/> Epicyclic	<input checked="" type="checkbox"/> Bevel	
11	Max. Torque @ Speed	kg-m, lb-ft/rpm	/	Teeth:			
12	Rated Input Speed	<input type="checkbox"/> Spec <input checked="" type="checkbox"/> Nom. rpm	1480/740	No. of Teeth Pinion, Gear			16 / 70
13	Rated Output Speed	<input type="checkbox"/> Spec <input type="checkbox"/> Nom. rpm	133	Gear Ratio			4.3750
14	Allowable Variation in Gear Ratio	± %	± 3%	Center Distance	mm, in.		226 mm
15	Max. Continuous Speed	rpm	1500	Pitch Dia. Pinion/Gear	mm, in.		80.8 mm / 3.181 in
16	Tripping Speed	rpm	N/A	Finish		RMS	
17	Service Factor (Minimum)	<input type="checkbox"/> API <input checked="" type="checkbox"/> AGMA	2.91	AGMA Gear. Factor "J"			0.597
18	Rotation from Coupling End	HS/LS	CW / CW	Melix Angle	deg.		8
19	Shaft End	Cylindrical/Inter	CYLINDRICAL	Normal Press. Angle	deg.		20
20	Flanged/Keyed (1) (2)		KEYED (1)	Net Face Width "F"	mm, in.		85 mm
21	Shaft Assembly Designation (API 2.1.16)		N/A	Pinion L/d			1.05
22				Normal Dia. Pitch "Pnc"	mm, in.		m _n = 5 mm
23	BASIC GEAR DATA				Backlash	mm, in.	0.2 mm - 0.3 mm
24	Mechanical Rating @ Speed	kW, HP/rpm	225 kW / 1500	Teeth Plating			N/A
25	Full Load HP Loss	kW, HP	71.4	Manufacturing Method:			
26	Mechanical Efficiency	%	97.5%	Teeth generation Process			HOBBLING
27	Pitch Line Velocity	m/sec, fpm	2.6 m/sec	Teeth Finish Process			GRINDING
28	Tooth Pitting Index "K"	Act./Allow.	1	Teeth Hardening Method			CARBURISING
29	Tangential Load "Wt"	kg, lb		Gear to Shaft Integ./Shrink-on			INTEGRAL
30	Bending Stress No. "St"			Rim Attachment			
31	Pinion	Act./Allow.	N/A	Radial Bearing:		Pinion:	Gear:
32	Gear	Act./Allow.	N/A	Type		TAPER	SPHERICAL
33	Material Index No.			Dia x Length	mm, in.	N/A	N/A
34	Journal Static Weight Load	Pinion kg, lb		Loading	kg, cm ² , psi	N/A	N/A
35		Gear kg, lb		Span	mm, in.	N/A	N/A
36	Residual Unbalance	Pinion kg, lb		Thrust Bearing: Location			N/A
37		Gear kg, lb		Type			N/A
38	WR: ref. to LS Shaft	kg-m ² , lb-ft ²	0.57 kg-m ²	Manufacturer			N/A
39	Breakaway Torque @ LS SHAFT	kg-m, lb-ft	N/A	Size: Area	mm ² , in. ²		N/A
40				Load Act./Allow	kg, cm ² , psi		N/A
41	ACCESSORIES				Internal Loads	kg, lb	N/A
42	<input type="checkbox"/> Gear Support	<input type="checkbox"/> Thermometers on Grg's		External Loads	kg, lb		N/A
43	<input type="checkbox"/> Common Baseplate	<input type="checkbox"/> Radial Position Detectors		Mat'l: Gear Casing-			6625 (DIN 1691)
44	<input type="checkbox"/> Adjusting Screws	<input type="checkbox"/> Axial Position Detectors		Shaft LS/MS			42CrMo4 / 47CrNiMo6
45	<input type="checkbox"/> Filter/Breather	<input type="checkbox"/> Rotor Response Analysis		Pinion Hardness			670-760 HV
46	<input type="checkbox"/> Purge Connection	<input type="checkbox"/> Gear Rotor Spare		Gear Rim Hardness			N/A
47	<input type="checkbox"/> Thermocouple/RTD	<input type="checkbox"/>		Oil System: Furnished by			HAMON-SOBELCO
48	WEIGHT		TEST/INSPECTION		Applicable Standard		HAMON STANDARD
49	Gear	kg, lb	550 kg	<input checked="" type="checkbox"/> Mechanical Running Test	Produced by Manual/Auto		MANUAL
50	Auxiliary	kg, lb	N/A	<input type="checkbox"/> W Job Lube System	No. of Unit Cooler/Filter		N/A
51	Max. Maint.	kg, lb	550 kg	<input type="checkbox"/> W Job Probes/Monitors	No. of L/O Pump		N/A
52	Painting	<input checked="" type="checkbox"/> Mfrs Standard		<input type="checkbox"/> W Full Load & Full Speed	Painting Material		H.D.G.S.
53		<input type="checkbox"/>		<input type="checkbox"/> Disassembly			
54	Remarks: Unless otherwise specified, latest API 613 shall govern.						
55							
56							

FRONT VIEW

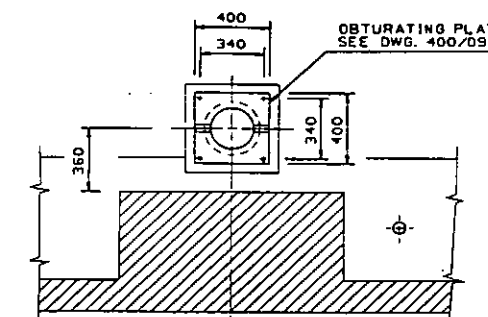


NOTE: VIBRATION SWITCH, SEE DWG. 400/08
 VIBRATION SWITCH SUPPORT, SEE DWG. 400/09
 VIBRATION SWITCH LOCATION, SEE DWG. 400/10

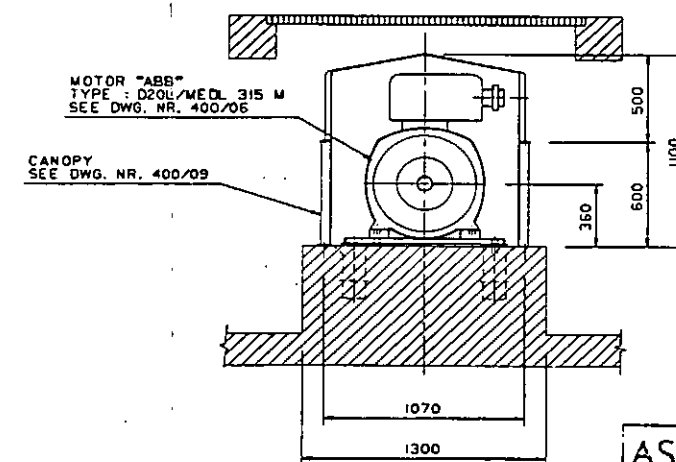
SECTION 1-1



SECTION 2-2



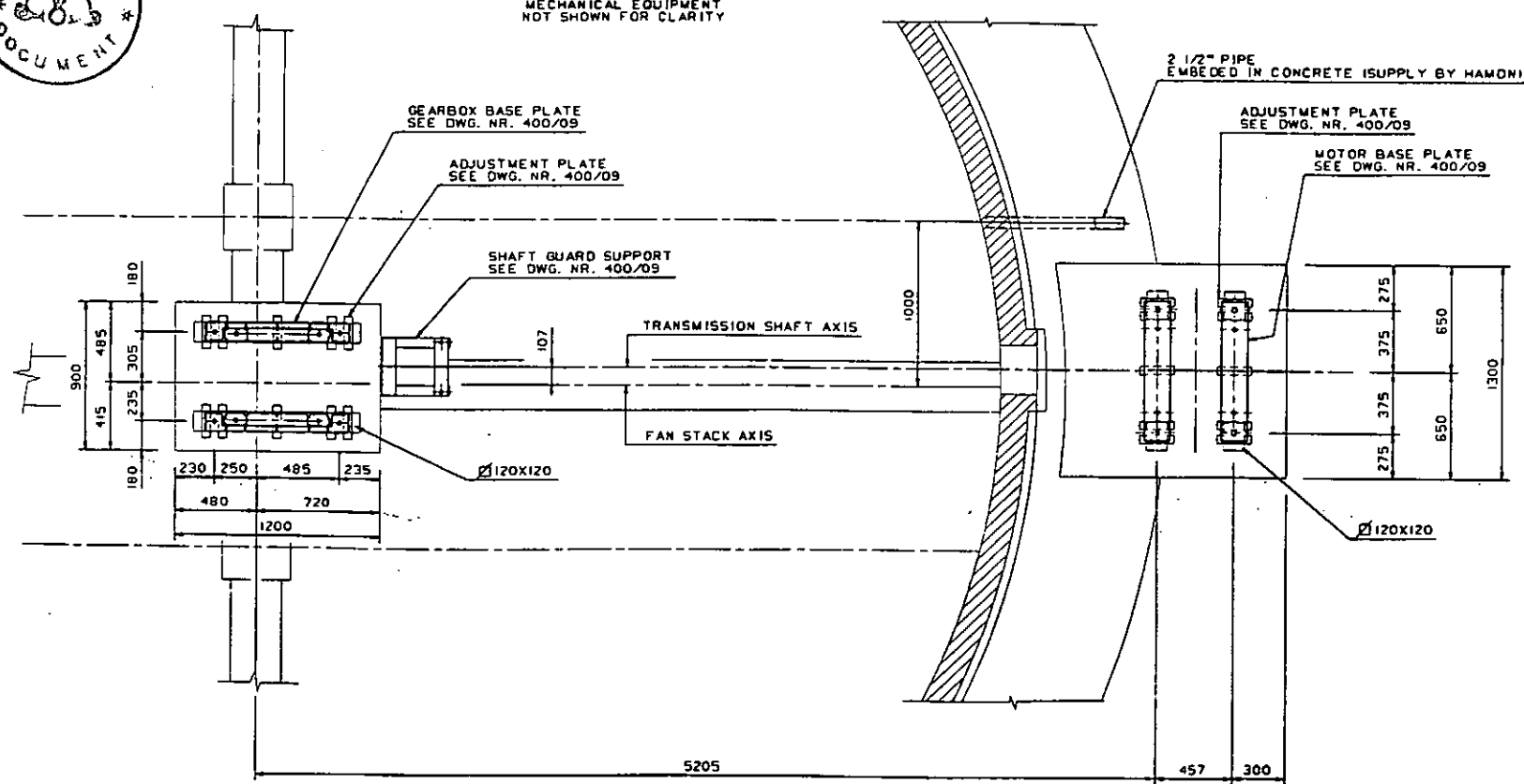
SECTION 3-3



AS BUILT

PLAN SECTION

MECHANICAL EQUIPMENT
 NOT SHOWN FOR CLARITY



GEARBOX LUBRICATION PIPES : SEE DWG. NR. 400/10

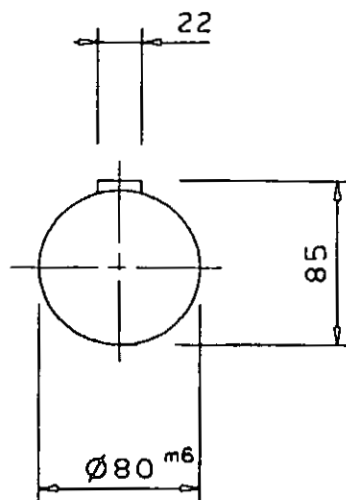
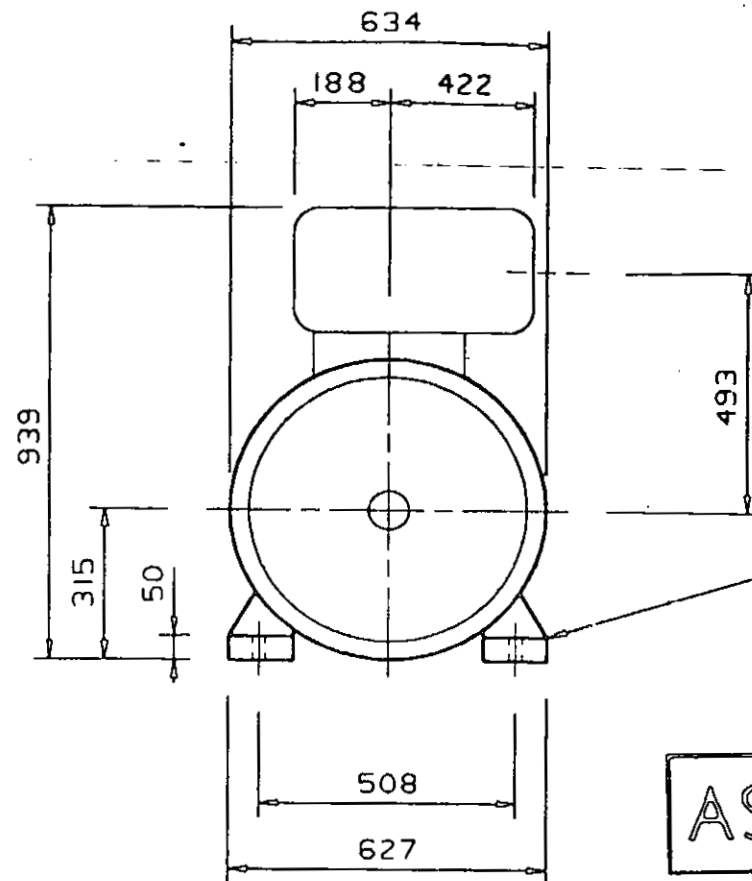
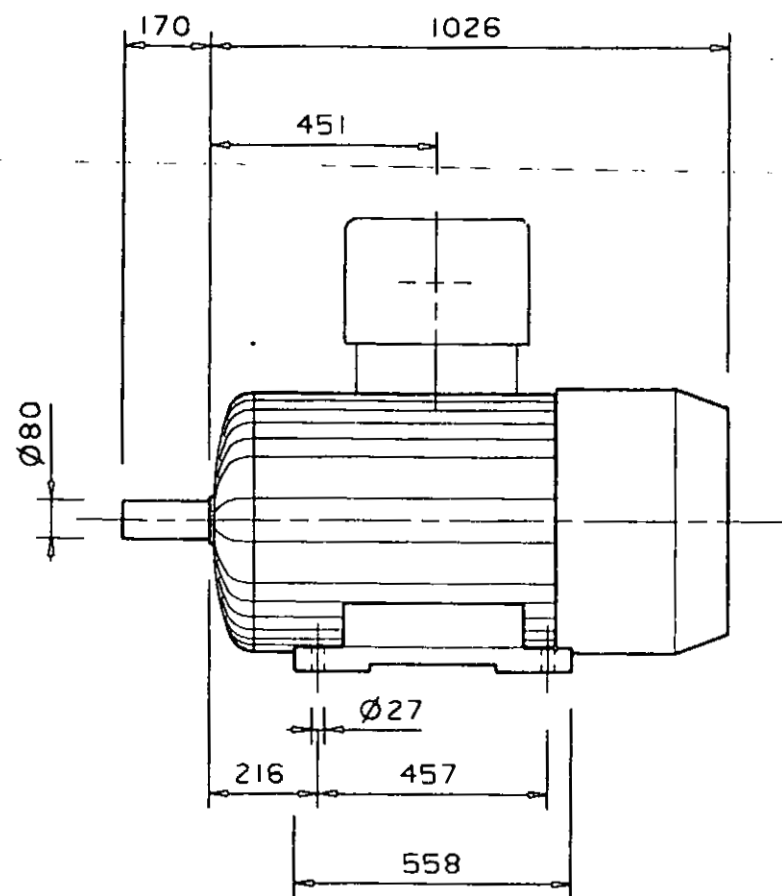


RESULT OF JGC'S REVIEW		JOB No. 0191010	
<input type="checkbox"/>	REVIEWED WITHOUT COMMENT	REVIEWED BY	DATE
<input type="checkbox"/>	COMMENTED AS MARKED	DEPT.	
<input type="checkbox"/>	RESUBMISSION FOR FURTHER REVIEW IS NECESSARY BY ()	Name & Sign	
<input type="checkbox"/>	NOT NECESSARY		

REV.	DATE	INIT	PAR	INIT	PAR	INIT	PAR	CODE	REMARKS
03	31/01/93	DEB	JNN	JNN	JNN	JNN	JNN		AS BUILT
02	21/06/93	DEB	JNN	JNN	JNN	JNN	JNN		REV. LOCATION VIBRATION SWITCH
01	04/04/91	DEB	JNN	JNN	JNN	JNN	JNN		REV. A DECIDES REV. 01 - REMOVE VIBRATION SWITCH - ADDED NOTE
A	16/01/91	DEB	JNN	JNN	JNN	JNN	JNN		REV. A
D	13/12/90	DEB	LEB	JNN	JNN	JNN	JNN		

PLANT	NATIONAL IRANIAN OIL COMPANY-IRAN	SCALE	1/20	SIZE	A1
ITEM N°	CT-2204 A/B-FA-1A/B/C/D	FILE	HBC3642		
INDUCED DRAFT COOLING TOWER					
MECHANICAL PART					
GENERAL ARRANGEMENT					
HAMON-SOBELCO S.A.					
HAMON COOLING TOWER DIVISION					
RUE CAPOUILLET 50-50					
1050 BRUXELLES - TEL. 210220 SOCMAM B.					
DRAWING NO	400/00	REV.	03		

PART NAME : C.HBC364200.400.06



MOTOR ITEM NO.
 CT-2204A-MA/MB/MC/MD
 CT-2204B-MA/MB/MC/MD

FOR THIS ORDER 8 MOTORS ARE REQUIRED.

MANUFACTURER: ABB
 TYPE: D20L/MEDL 315M 4/8
 FORME: B3
 NOM. POWER: 90/15Kw.
 SPEED: 1500/750rpm.

VOLTAGE: 400v.
 PROTECTION: IP55 EEXD
 GAS GROUP D (FLAME PROOF)
 INSULATION CLASS: F
 FREQUENCY: 50Hz.

GENERAL COMMENTS :

1. TERMINAL BOX FOR SPACE HEATER SHALL BE SHOWN.
2. MOTOR DATA SHEET & DETAILED TERMINAL BOX DWG. SHALL BE SUBMITTED.
3. CABLE SIZE AND CABLE ENTRY THREAD SIZE ARE AS FOLLOWS :

HI-SPEED
 (2X3C-95 SQ MM
 2XM50X1,5 PITCH)

LOW-SPEED
 (3C-25 SQ MM
 M32X1,5 PITCH)

SPACE HEATER
 (2C-4 SQ MM
 M25X1,5 PITCH)



AS BUILT

RESULT OF JGC'S REVIEW		JOB No. 0 61000																																																				
<input type="checkbox"/> REVIEWED WITHOUT COMMENT	REVIEWED BY	DATE																																																				
<input type="checkbox"/> COMMENTED AS MARKED	DEPT.																																																					
<input type="checkbox"/> RESUBMISSION FOR FURTHER REVIEW IS	Name & Sign																																																					
<input type="checkbox"/> NECESSARY BY ()																																																						
<input type="checkbox"/> NOT NECESSARY																																																						
<table border="1"> <tr> <td>REV. 1</td><td>REV. 2</td><td>REV. 3</td><td>REV. 4</td><td>REV. 5</td><td>REV. 6</td><td>REV. 7</td><td>REV. 8</td><td>REV. 9</td><td>REV. 10</td><td>REV. 11</td><td>REV. 12</td><td>REV. 13</td><td>REV. 14</td><td>REV. 15</td><td>REV. 16</td><td>REV. 17</td><td>REV. 18</td><td>REV. 19</td><td>REV. 20</td><td>REV. 21</td><td>REV. 22</td><td>REV. 23</td><td>REV. 24</td><td>REV. 25</td><td>REV. 26</td><td>REV. 27</td><td>REV. 28</td><td>REV. 29</td><td>REV. 30</td><td>REV. 31</td><td>REV. 32</td><td>REV. 33</td><td>REV. 34</td><td>REV. 35</td><td>REV. 36</td><td>REV. 37</td><td>REV. 38</td><td>REV. 39</td><td>REV. 40</td><td>REV. 41</td><td>REV. 42</td><td>REV. 43</td><td>REV. 44</td><td>REV. 45</td><td>REV. 46</td><td>REV. 47</td><td>REV. 48</td><td>REV. 49</td><td>REV. 50</td><td>REV. 51</td><td>REV. 52</td> </tr> </table>			REV. 1	REV. 2	REV. 3	REV. 4	REV. 5	REV. 6	REV. 7	REV. 8	REV. 9	REV. 10	REV. 11	REV. 12	REV. 13	REV. 14	REV. 15	REV. 16	REV. 17	REV. 18	REV. 19	REV. 20	REV. 21	REV. 22	REV. 23	REV. 24	REV. 25	REV. 26	REV. 27	REV. 28	REV. 29	REV. 30	REV. 31	REV. 32	REV. 33	REV. 34	REV. 35	REV. 36	REV. 37	REV. 38	REV. 39	REV. 40	REV. 41	REV. 42	REV. 43	REV. 44	REV. 45	REV. 46	REV. 47	REV. 48	REV. 49	REV. 50	REV. 51	REV. 52
REV. 1	REV. 2	REV. 3	REV. 4	REV. 5	REV. 6	REV. 7	REV. 8	REV. 9	REV. 10	REV. 11	REV. 12	REV. 13	REV. 14	REV. 15	REV. 16	REV. 17	REV. 18	REV. 19	REV. 20	REV. 21	REV. 22	REV. 23	REV. 24	REV. 25	REV. 26	REV. 27	REV. 28	REV. 29	REV. 30	REV. 31	REV. 32	REV. 33	REV. 34	REV. 35	REV. 36	REV. 37	REV. 38	REV. 39	REV. 40	REV. 41	REV. 42	REV. 43	REV. 44	REV. 45	REV. 46	REV. 47	REV. 48	REV. 49	REV. 50	REV. 51	REV. 52			
NIOC DOC. No.	PO 06-1075-DW057-3																																																					
JV(JGC) DOC. No.	V 215A 301 A 057 A3 3																																																					
	PURCHASE ORDER No.	SERIAL SIZE REV.																																																				

02	01/08/93	DBK	4	DBK	4				AS BUILT																																										
01	04/04/91	DEB	4	LEB	4				REV.A BECOMES REV.01 - GEN. COM.																																										
A	16/01/91	DEB	4	JNH	4				ADDED GEN. COMMENTS & MOTOR ITEM																																										
0	18/12/90	DEB	4	LEB	4																																														
REV.	DATE	INIT	PAR	INIT	PAR	INIT	PAR	CODE	REMARKS																																										
		DRAWN		CHECK		APPR.																																													
PLANT NATIONAL IRANIAN OIL COMPANY-IRAN ARAK REFINERY ITEM N°. CT-2204 A/B-FA-IA/B/C/D									SCALE NONE	SIZE A3																																									
INDUCED DRAFT COOLING TOWER MOTOR ABB TYPE : D20L/MEDL 315M									FILE																																										
HAMON-SOBELOCO S.A. HAMON COOLING TOWER DIVISION TF : 02/535.12.11 RUE CAPOUILLET,50-58 1060 BRUXELLES-TELEX:21822B SOBHAM B.									HBC3642																																										
THIS DRAWING IS OUR PROPERTY. IT SHALL BE TREATED AS CONFIDENTIAL AND MUST NOT BE USED TO OUR DISADVANTAGE. IT SHALL BE NEITHER REPRODUCED NOR MADE AVAILABLE TO THIRD PARTIES WITHOUT OUR CONSENT. WE RESERVE THE RIGHTS ON ALL PATENTS GRANTED AND ON THE KNOW-HOW CONTAINED IN THIS DRAWING.									DRAWING NO	REV.																																									
									400/06	02																																									
1	2	3	4	5	6	7	8	9	10	11	12	13	14	15	16	17	18	19	20	21	22	23	24	25	26	27	28	29	30	31	32	33	34	35	36	37	38	39	40	41	42	43	44	45	46	47	48	49	50	51	52
HBC3642													400/06																				02																		
REV 01		2																																																	

DRAWING BY COMPUTER GRAPHIC EQUIPMENT

